

Science builds up future,
while quality sets up resplendence.

挑战极限 勇于创新

新
新欧公司拥有先进精良的工艺设备和持久领先的创新能力，
始终致力于企业技术进步和科技创新。

REYVALVE

精益求精 追求完美

Keep improving pursue the perfection



公司简介 Brief Introduction

永嘉润锦自控阀门有限公司是各类工业过程控制阀及相关自控设备的专业制造企业。我们一直致力于工业过程控制阀及相关设备的研制与生产,是一个集科研开发与制造经营为一体的科技型企业。我厂专业制造气动、电动工业控制阀及工艺阀门等38个系列400多个规格的产品,并广泛应用于造纸、化纤、石化、石油、电力、冶金、化工、环保、轻工、制药、楼宇自动化等工业部门的自动化控制系统。

公司拥有雄厚的技术力量、精良的设备、先进的检测手段、精湛的生产工艺、规范科学的管理以及ISO9001国际质量保证体系。选择新欧自动化设备您将没有后顾之忧。

我们秉承“质量为根,诚信为本”的经营理念,用心去经营我们的事业。以用户为中心,为用户提供全程、全方位服务宗旨使您在拥有一个好产品的同时更拥有一个放心的服务。把问题告诉我们,剩下的事由我们来办!

我们诚挚地欢迎业界朋友来我公司考察指导,进行技术合作与交流。希望通过交流,润锦自动化设备将成为您最终的选择,能与您合作是我们的光荣!

Yongjia Rey Automatic Valve Co.,Ltd specialized in manufacturing various types of industrial process regulating valves and related automatic control equipments.It's a scientific and technological enterprise which integrates scientific research and development and manufacturing operations.Our company professionally manufactures pneumatic and electric industrial regulating valves,including 38 series over 400 specifications of products and widely used in papermaking,chemical fiber,petrochemical,oil,electricity,metallurgical,chemical,environmental protection,light industry,pharmaceuticals,building automation and other industrial sectors of the automatic control system.

Our company has strong technical forces,excellent equipment,advanced inspection instruments,exquisite production technology, standardized and scientific management as well as ISO9001 international quality system.

'Quality is the first' is the business philosophy of our company. Our principles of user-Centric and providing clients with an allround service enable users to have not only better products but also the more assured of service.

We sincerely welcome you to visit our company and carry on technical cooperation and communication with us.It will be great honor to cooperate with you.



质量是我们的生命线,创造众望所归的品牌,是我们的追求,也是我们品牌价值的所在,每一份荣誉,是专业人士对我们的产品的认可和赞同。

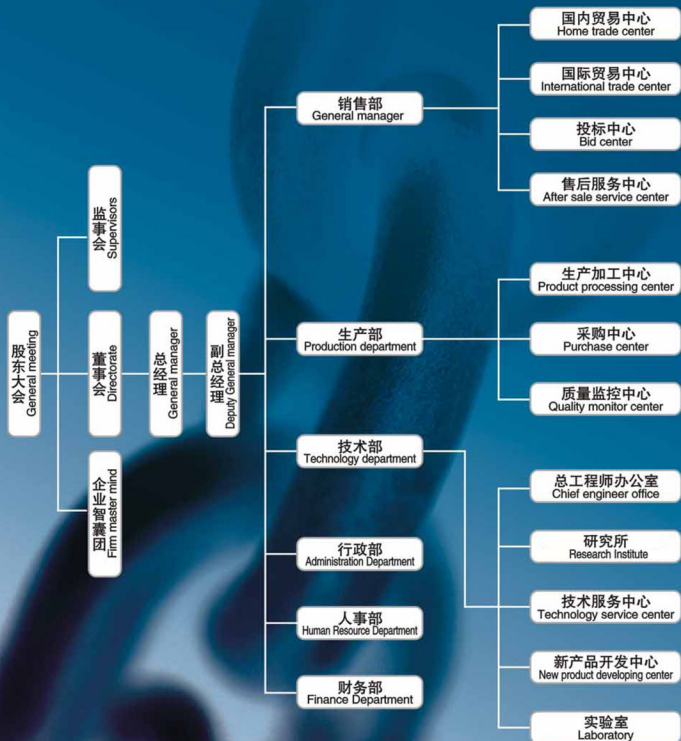
Quality as life to us Create popular brand with fame is our ambition, and also lies in value of brand. Every honour is accepted and praised for our products from experts.

YONGJIA REY AUTOMATIC VALVE CO., LTD

www.reyvalve.com

组织机构图

Organization Framework



■ 企业法人营业执照 Business License



■ 开户许可证书 Bank license



■ ISO9001





电动调节阀系列

Motorized or Electric Control Valve Series



KZDLN电动双座调节阀
Big-port Electric Double-seated Control Valve (KZDLN)



电动智能笼式调节阀
Motorized & Intelligent Cage Guide Control Valve

本公司生产的电动调节阀系列高性能产品，具有结构新颖、流阻小、流量系数大、调节精度高等特点，被广泛应用于电力、石化、冶金、制药、造纸、水处理、城市供暖等自动控制场合。

材质：铸钢、不锈钢、双相钢、高温钢、合金钢、哈氏合金、蒙乃尔合金、镍合金、钛合金等。

Motorized & electric control valve series we product have high performance in application. It has characteristic like structure novelty, low flow rate resistance, great flow rate option, high precision of control. It widely used in electricity, petrochemical, metallurgical, pharmaceuticals, papermaking, sewage disposal, city heat-support and other industrial sectors of the automatic control system.

Material: Cast steel, stainless steel, dual-phase steel, hot steel, alloy steel, Hastelloy, Monel alloy, Ni-base alloy, titanium alloy etc.

- 1) Nominal Size: DN 10-600mm
- 2) Nominal Pressure: ANSI 150-2500lb; PN16-320
- 3) Flange Standards: GB、HG、JB/T、ANSI、JIS、DIN、BS

全面支持您的自动化控制系统
We Fully Support Your's Automatic Control System



氧气专用电动智能双座调节阀
Motorized & Intelligent Double-seated Control Valve(Oxygen only)



电动智能调节阀
Motorized & Intelligent Control Valve



电动智能调节阀
Motorized & Intelligent Control Valve



电动高温套筒调节阀
Motorized & High-temp Cage Guide Control Valve



三通温控调节阀
3-way Temp-electric Control Valve



电子式调节阀
Electric Control Valve



KHLS小口径单座调节阀
Small-port Single-seated Control Valve (KHLS)



电动智能调节阀
Motorized & Intelligent Control Valve



KHPS电动高压单座调节阀
Motorized High-Pressure Single-seated Control Valve(KHPS)



KZAZM电动套筒调节阀
Motorized Diaphragm Cage-guide Control Valve(KZAZM)



电子式疏水调节阀
Electric Trap Control Valve



气动调节阀系列

Pneumatic Control Valve Series



本公司生产的气动调节阀系列高性能产品，广泛应用于石油、化工、冶金、电站等工业部门，控制气体、液体、蒸汽等介质，适用于对泄露量有严格要求的场合。

材质：铸钢、不锈钢、双相钢、高温钢、合金钢、哈氏合金、蒙乃尔合金、镍合金、钛合金等。

Pneumatic control valve series we product have high performance in application. It widely used in petrochemical, chemistry, metallurgical, electricity etc, control medium like gas, fluid, steam etc, mostly used in strict leakages.

Material: Cast steel, stainless steel, dual-phase steel, hot steel, alloy steel, Hastelloy, Monel alloy, Ni-base alloy, titanium alloy etc.

- 1) Nominal Size: DN 20-600mm
- 2) Nominal Pressure: ANSI 150-2500lb; PN16-320
- 3) Flange Standards: GB、HG、JB/T、ANSI、JIS、DIN、BS



KHCB笼式双座调节阀
Double-seated Cage Guide Control Valve (KHCB)



不锈钢调节阀系列
Stainless Steel Control Valve



气动薄膜精小型低温调节阀
Pneumatic Diaphragm Low-temp Control Valve



KTOB笼式调节阀
Pneumatic Diaphragm Cage Control Valve (KTOB)



气动薄膜波纹管密封调节阀
Bellow Sealed Pneumatic Diaphragm Control Valve



气动三通调节阀
3-way Pneumatic Diaphragm Control Valve



气动薄膜精小型调节阀
Pneumatic Diaphragm Control Valve



气动薄膜套筒调节阀
Pneumatic Diaphragm Cage-guide Control Valve



KHSC笼式单座调节阀
Single-seated Cage Guide Control Valve (KHSC)



气动高压调节阀
High-Pressure Pneumatic Diaphragm Control Valve



KHPC高压笼式调节阀
High-Pressure Cage-guide Control Valve (KHPC)



KHTS单座调节阀
Single-seated Pneumatic Diaphragm Control Valve (KHTS)



KZMAS气动薄膜高压角型调节阀
Pneumatic Diaphragm High-Pressure Angle Control Valve (KZMAS)



KZHP精小型气动单座调节阀
Pneumatic Diaphragm High-Pressure Single-seated Control Valve (KZHP)



气动活塞Y型疏水阀
Pneumatic Diaphragm Trap Control Valve



氧气专用气动薄膜套筒调节阀
Pneumatic Diaphragm Cage-guide Control Valve (Oxygen only)



气动衬氟单座调节阀
Pneumatic Diaphragm Lined Single-seated Control Valve

全面支持您的自动控制系统
We Fully Support Your's Automatic Control System





快速切断阀系列

Quick Shut-Off Valve Series



高性能气动快速切断阀
High-performance Pneumatic Quick Shut-off Valve



气动快速切断阀
Pneumatic Quick Shut-off Valve



气动三通切断阀
3-way Pneumatic Shut-off Valve

本系列气动切断阀由切断机构和气动执行机构组成，该阀具有快速启闭、结构简单、操作方便、密封性好等特点。主要应用于无杂质、无颗粒的液体、气体介质，要求快速关闭，快速放空的自动控制场合。

材质：铸钢、不锈钢、双相钢、高温钢、合金钢、哈氏合金、蒙乃尔合金、镍合金、钛合金等。

Quick Shut-Off Valve combined by valve and pneumatic actuator, It has characteristic like quick open-close, simple structure, convenience operate, good airproof. It mostly used in automatic control system with pure fluid or gas, and also requires quickly open-close.

Material: Cast steel, stainless steel, dual-phase steel, hot steel, alloy steel, Hastelloy, Monel alloy, Ni-base alloy, titanium alloy etc.

- 1) Nominal Size: DN 15-1500mm
- 2) Nominal Pressure: ANSI 150-1500lb; PN6.0-160
- 3) Flange Standards: GB、HG、JB/T、ANSI、JIS、DIN、BS

全面支持您的自动化控制系统
We Fully Support Your's Automatic Control System



气动切断阀
Pneumatic Quick Shut-off Gate Valve



KZMQ气动薄膜调节阀
Pneumatic Diaphragm Shut-off Valve(KZMQ)



氧气专用切断阀
Shut-off Valve(Oxygen Only)



气动活塞切断阀
Pneumatic Piston Shut-off Valve



KZSPQ气动快速切断截止阀
Pneumatic Quick Shut-off Globe Valve(KZSPQ)



气动三通切断阀
3-way Pneumatic Shut-off Valve



KZXQ轻型气动活塞切断阀
Pneumatic Quick Shut-off Valve (KZXQ)



气动活塞快速切断阀
3-way Pneumatic Shut-off Valve



气动套筒切断阀
Pneumatic Cage-guide Shut-off Valve



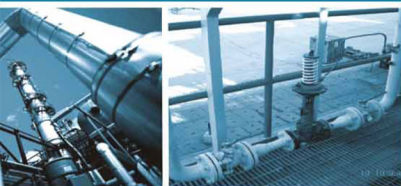
KZSNC气动高温快速切断阀
3-way High-temp Pneumatic Shut-off Valve



气动放料阀
Pneumatic Discharge Valve

自力式调节阀系列

Self-Operated Control Valve Series



自力式系列调节阀是一种无需任何外来能源而依靠被调介质自身的压力、温度的变化来进行自动调节的节能型产品。该阀由阀体、执行机构、感应元件等部件组成，被广泛应用于石化、电力、冶金、纺织等压力、压差及温度控制的场合。

材质：铸钢、不锈钢、双相钢、高温钢、合金钢、哈氏合金、蒙乃尔合金、镍合金、钛合金等。

Self-Operated Control Valve Series is a kind of Energy-saving product. It uses the medium's transformation of pressure or temperature to control itself. It combined by valve, actuator and introduction-element. It widely used in the project controlled by different pressure or temperature, like petrochemical, electricity, metallurgical, spinning etc.

Material: Cast steel, stainless steel, dual-phase steel, hot steel, alloy steel, Hastelloy, Monel alloy, Ni-base alloy, titanium alloy etc.

- 1) Nominal Size: DN 20-400mm
- 2) Nominal Pressure: ANSI 150-1500lb; PN16-160
- 3) Flange Standards: GB, HG, JB/T, ANSI, JIS, DIN, BS



全不锈钢自力式压力调节阀组
Stainless steel Self-Operated Control Valve



自力式压力调节阀
Pressure Self-Operated Control Valve



KZZWP自力式温度调节阀
Temp-electric Self-Operated Control Valve(KZZWP)



高压自力式压力调节阀
High-Pressure Self-Operated Control Valve



KZZV自力式差(微)压调节阀
Differential-Pressure Self-Operated Control Valve(KZZV)

全面支持您的自动化控制系统
We Fully Support Your's Automatic Control System



- 1、最大工作压力(Max Operated Pressure): 20MPa
- 2、最高工作温度(Max Operated Temperature): 540°C
- 3、最大工作压差(Max Operated Differential-Pressure): 12MPa
- 4、最大规格(Max Specification): P1=DN300 P2=DN600



减温减压装置系列
Valve Team Of Reduce Temp & Pressure



氧气调节阀组
Control Valve Team Of Oxygen Pressure

蝶阀系列 Butterfly Valve Series



KZSHW气动活塞调节切断蝶阀
Pneumatic Control & Shut-Off Butterfly Valve



大口径低负载蝶阀系列
Big-port Motorized Butterfly Valve

本系列蝶阀具有流量大、压力损失小、动作灵敏稳定、使用可靠等优点，密封形式有硬密封、软密封、通风等，可满足不同工艺的需要，特别适用于带有悬浮或浓浆状流体及各种大流量管路，广泛用于电力、石化、冶金、制药、造纸、水处理、城市供暖等自动控制场合。

材质：铸钢、不锈钢、双相钢、高温钢、合金钢、哈氏合金、蒙乃尔合金、镍合金、钛合金等。

Our company's butterfly valve excellence in great flow-rate, little pressure-loss, act sensitive, stabilization and credibility. According to different application, we have hard-sealing, soft-sealing and bleed butterfly valves. Especially for suspended or jatex fluid and huge flow rate pipe, widely used in electricity, petrochemical, metallurgical, pharmaceuticals, papermaking, sewage disposal, city heat-support and other industrial sectors of the automatic control system.

Material: Cast steel, stainless steel, dual-phase steel, hot steel, alloy steel, Hastelloy, Monel alloy, Ni-base alloy, titanium alloy etc.

- 1) Nominal Size: DN 50-3000mm
- 2) Nominal Pressure: ANSI 150-900lb; PN1.0-10.0
- 3) Flange Standards: GB、HG、JB/T、ANSI、JIS、DIN、BS

全面支持您的自动化控制系统
We Fully Support Your's Automatic Control System



气动硬密封调节蝶阀
Hard-sealed Pneumatic Control Butterfly Valve



电动调节蝶阀
Electric Control Butterfly Valve



气动薄膜调节蝶阀
Pneumatic Diaphragm Control Butterfly Valve



精小型气动美标衬氟蝶阀
Pneumatic Lined Butterfly Valve(ANSI)



电动调节蝶阀
Motorized Control Butterfly Valve



气动蝶阀
Pneumatic Rubber Butterfly Valve



电动衬氟蝶阀
Electric Lined Butterfly Valve



KZSCW气动活塞调节蝶阀
Pneumatic Telescopic Butterfly Valve (KZSCW)



气动伸缩蝶阀
Pneumatic Telescopic Butterfly Valve



KZDLW电子式电动调节蝶阀
Electric Control Butterfly Valve



KWB300高性能蝶阀
High-performance Butterfly Valve(KWB300)

V型球阀系列

V-Port Ball Valve Series



电动V型调节阀
Electric Control V-port Ball Valve



气动精小型V型球阀
Pneumatic V-port Ball Valve

本公司生产的V型球阀是一种高精度控制阀门。V型球芯设计带有特殊的V型缺口，具有精确的截流控制功能，密封性能优越、结构紧凑、流量大、可调比大，因此广泛应用于石油、化纤、电力、制药、造纸、水处理等各种带粘性介质的控制场合。

材质：铸钢、不锈钢、双相钢、高温钢、合金钢、哈氏合金、蒙乃尔合金、镍合金、钛合金等。

Our company's V-Port Ball Valve has great precision to control. The ball has a special V-port for precision control. Also V-Port Ball Valve is great in sealing, construction, flow-rate and rangeability, so it was widely used in the automatic control system has viscid medium like oil, chemical fiber, electricity, pharmaceuticals, papermaking and sewage disposal.

Material: Cast steel, stainless steel, dual-phase steel, hot steel, alloy steel, Hastelloy, Monel alloy, Ni-base alloy, titanium alloy etc.

- 1) Nominal Size: DN 20-600mm
- 2) Nominal Pressure: ANSI 150-600lb; PN16-64
- 3) Flange Standards: GB, HG, JB/T, ANSI, JIS, DIN, BS

全面支持您的自动化控制系统
We Fully Support Your's Automatic Control System



气动V型球阀
Pneumatic V-port Ball Valve



气动V型调节阀
Pneumatic Control V-port Ball Valve



电动V型调节阀
Electric Control V-port Ball Valve



气动V型调节阀
Pneumatic Control V-port Ball Valve



气动大口径V型球阀
Big-port Pneumatic V-port Ball Valve



气动V型调节阀
Pneumatic Control V-port Ball Valve



气动V型调节阀
Pneumatic Control V-port Ball Valve



手动V型球阀
Hand-operated V-port Ball Valve



气动V型调节阀
Pneumatic Control V-port Ball Valve



气动偏心旋转阀
Pneumatic Eccentric Rotating valve

O型球阀系列

O-Port Ball Valve Series



三段式球阀
3-pieces Ball Valve



电动智能调节球阀
Motorized & Intelligent Control Ball Valve

本系列O型球阀、球芯采用O型通孔。固定球式阀门采用弹性阀座补偿密封。双保护盖式填料函装置。此阀门的流量系数大，流阻小，角行程启闭迅速。适用于化工、冶金、造纸、给排水等系统的控制。

材质：铸钢、不锈钢、双相钢、高温钢、合金钢、哈氏合金、蒙乃尔合金、镍合金、钛合金等。

O-Port Ball Valve has an O-port ball, trunnion ball valve has a flexible seat to enhance the seal, packing with double protects. The O-port ball valve have great flow rate, low flow rate resistance, quick open-close. It mostly used in chemistry, metallurgical, papermaking, water supply and sewerage engineering.

Material: Cast steel, stainless steel, dual-phase steel, hot steel, alloy steel, Hastelloy, Monel alloy, Ni-base alloy, titanium alloy etc.

- 1) Nominal Size: DN 20-300mm
- 2) Nominal Pressure: ANSI 150-2500lb; PN16-320
- 3) Flange Standards: GB, HG, JB/T, ANSI, JIS, DIN, BS

全面支持您的自动化控制系统
We Fully Support Your's Automatic Control System



三段式高压球阀
3-pieces High-pressure Ball Valve



电动衬氟球阀
Electric Lined Ball Valve



日标气动球阀
Pneumatic Ball Valve(JIS)



电子式调节球阀
Electric Control Ball Valve



气动三通球阀
3-way Pneumatic Ball Valve



气动快速切断球阀
Pneumatic Quick Isolated Ball Valve



气动铸铁球阀
Pneumatic Ball Valve(Cast Iron)



气动球阀
Pneumatic Ball Valve



气动球阀
Pneumatic Ball Valve



气动全塑球阀
Pneumatic Plastic Ball Valve



防爆电动球阀
Explosion-proof Electric Control Ball Valve

>> 阀门附件系列 Accessory



YTC电气智能定位器
YTC Digital Electrical Positioner



YTC防爆电气智能定位器
YTC Digital Explosion-proof
Electrical Positioner



西门子电气智能定位器
SIEMENS Digital Electrical Positioner



福斯智能定位器
FLOWSERVE Digital Electrical Positioner



SMC阀门定位器
SMC Positioner



新型限位开关
New type limit switch



气动薄膜执行机构
Pneumatic Diaphragm actuator



ELOMATIC 气动执行机构
ELOMATIC Pneumatic actuator



防爆限位开关
Explosion-proof Limit Switch



高性能多级节流阀芯组件
High-performance Multi-expenditure Cage



高性能低噪音套筒
High-performance Low-noise Cage



气动保位阀
Pneumatic Lock valve

>> 部份典型使用现场 Application



山东昌邑石化集团使用现场



山西兰花科技集团使用现场



沙钢集团使用现场



南通(惠生)造船集团使用现场



四川天然气集团使用现场



中铝(郑州)公司使用现场



首钢集团使用现场



首钢集团使用现场



北京中芯国际集团使用现场



唐山热电厂使用现场



济钢集团使用现场



四川化工集团使用现场